



NEC ELECTRONICS

DIGITAL DATA BOOK

4/8/16-BIT
MICROCOMPUTERS

ON-LINE HELP

Version 3.00 // November 1996



INTRODUCTION

Welcome to NEC's latest edition of Digital Data Books on CD ROM. The CD-ROM on hand provides almost complete documentation for the 75X, 75XL, 78K/0, 78K/3 and 78K/4 microcomputer families.

The CD ROM holds more than 20.000 pages of original technical documentation in Adobe PDF (Portable Document Format). Included are datasheets, user manuals and other usefull documents (e.g. Application Notes and the up-to-date [Semiconductor Selection Guide](#)).

Using a sophisticated search engine with the Acrobat Reader you can do a [full text search](#) over all documents on this CD-ROM.

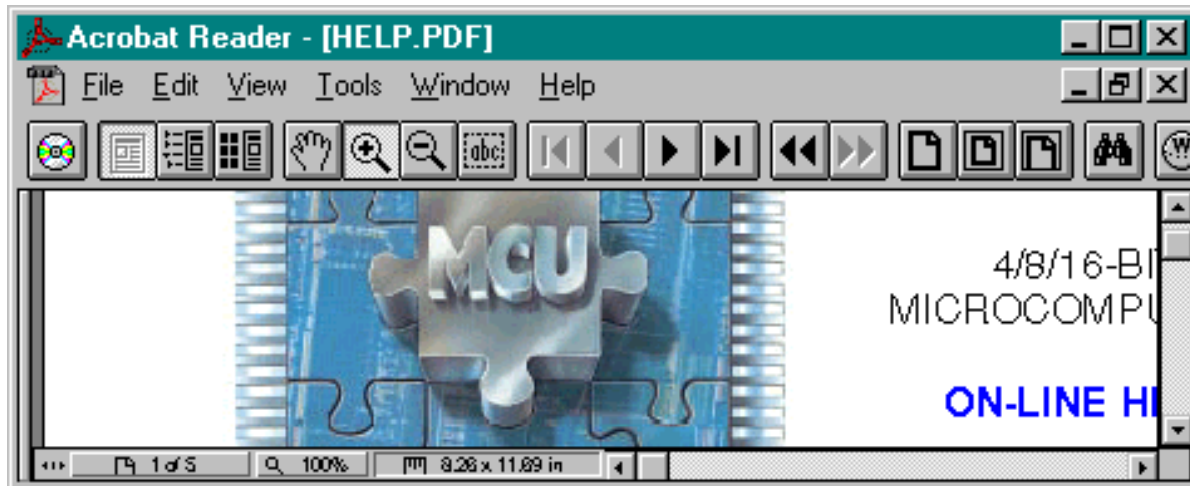
With this 3rd edition, user interface functions have been extended to allow easier search for device data and improved document navigation. The add-on software to the © Acrobat Reader now comes as a standard Plug-In that will be further extended in the future.

The following On-Line help will show you how to use the new user interface. If you have any questions about this CD-ROM, please feel free to contact [NEC directly](#) our contact [hotline service](#).



FIRST STEPS

The new user interface comes as a plug-in to the Acrobat Reader. This means, that it will only work from *within* the Acrobat Reader. If installation was successful, the additional software to **open** documents or **select a device** by its technical data, will be started automatically when you start the Acrobat Reader.



Changes to the Acrobat Reader are minimal. All original functions are available as before. The only change in the Acrobat Reader's screen layout is one **additional button** with a CD ROM icon. If you click on this button, a new window will open...

The same will happen if you press CTRL+N or if you select 'NEC Digital Data Books' from the Acrobat Reader's file menu.



MAIN INDEX DIALOG - BASICS

The MAIN INDEX DIALOG is used to manage a *collection* of different CD ROMs containing Digital Data Books from NEC and other manufacturers. For this CD ROM holds the very first edition of Digital Data Books, there is (as yet) only one item in the list :



To select this one item you can either double-click it or hit the return key. If there are more items in the list, you can use the cursor keys or the mouse to select individual items from the list. If you double-click an item or hit the return key, you will see the [main table of contents](#) for the selected CD ROM. To add a new Digital Data Book to the list please follow the instructions on the next pages.

To remove an item from the list, click on „Remove“ or press Alt+R; you will be prompted if you really want to delete the entry. In case you accidentally removed an item from the list, you can always restore the entry by clicking „Add“ then following the instructions to [add a CD ROM](#) to the list.



MAIN INDEX DIALOG - ADDING A NEW CD ROM



Using this feature of our software, a new Digital Data Book or a revised edition of an already installed Digital Data Book can be installed on your local PC without running the complete installation. To add a new Digital Data Book to the main index list please click the button „Add“ or press ALT+A.

In the following dialog you can select in which drive or network directory the new CD is located :



Please select a drive using the drive-list combo box. If the CD ROM is recognized by our software, both CD ROM title and the version number will be shown in the dialog. The OK button will only be enabled if the CD ROM is recognized by our software.

If you click the (enabled) OK button, all required information (product and document database) will be automatically copied to your local harddisk.

If you want to distribute the CD ROM contents on a local network, please follow the instructions for [network-installation](#).

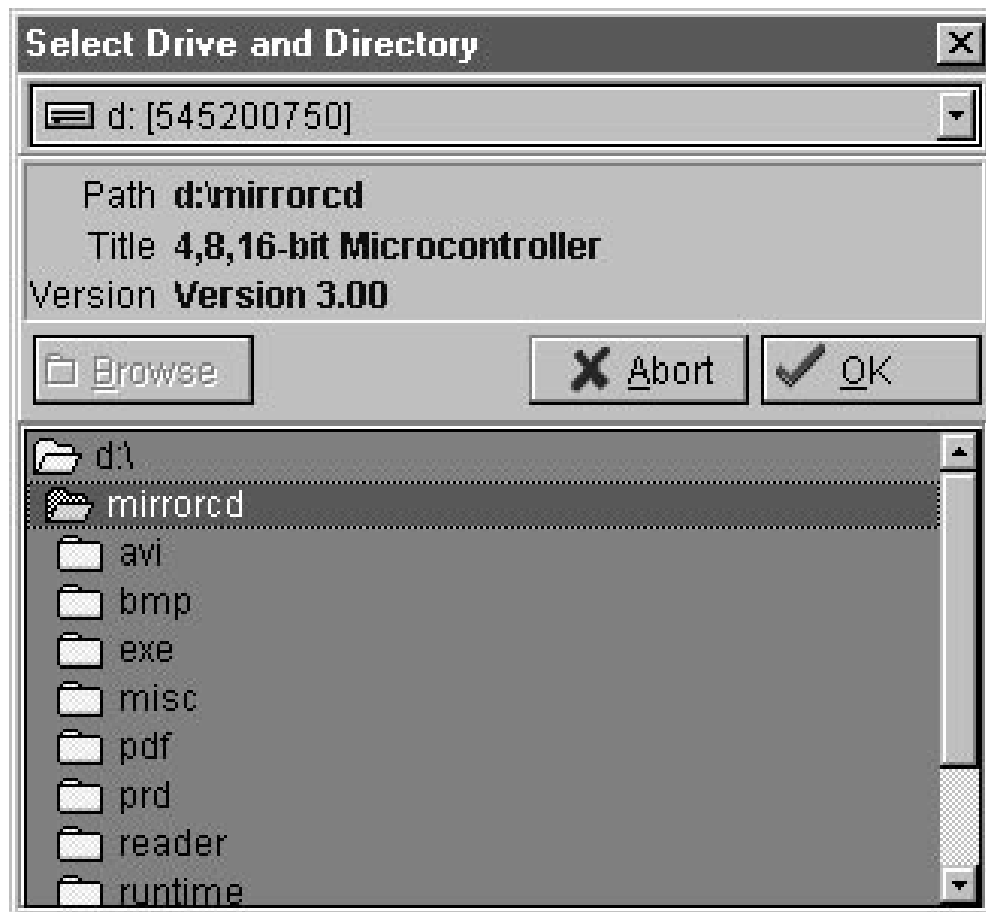


MAIN INDEX DIALOG - NETWORK INSTALLATION

It is very easy to install the Digital Data Book CD for use in a local network.

- (1) Make sure your server has enough available space to hold the complete CD ROM contents (about 620 MB for this edition)
- (2) Create a directory on the network server. Users will not write to this directory so it can be made R/O when network installation is done.
- (3) Copy the complete CD ROM (including the root directory) to the network server

All network users can now setup their individual Digital Data Books from the server and access data without a local CD ROM drive. Using the „Browse“ button to select a drive and directory all network users have access to the CD ROM contents.





MAIN DIALOG

NEC - Digital Data Books

Main table of Contents

- NEC Electronic Databook
- 75X Series
- 75XL Series**
- 78K0 Series
- 78K/III Series
- 78K/IV Series
- NEC Electronics Presentations
- Semiconductor Selection Guide
- Application Notes
- Other Documents
- Adresses
- HELP

PRODUCT DATA

Device ID	ROM Size [KB]	ROM Type	RAM [Bytes]	EEPROM Size	IO
75512	12	Mask	256	NO	
75512(A)	12	Mask	256	NO	
75516	16	Mask	256	NO	
75516(A)	16	Mask	256	NO	
75P516	16	OTP	256	NO	
75517	24	Mask	512	NO	
75517(A)	24	Mask	512	NO	
75518	32	Mask	512	NO	
75518(A)	32	Mask	512	NO	
75P518	32	OTP	512	NO	
750004	4	Mask	256	NO	
750006	6	Mask	256	NO	
750008	8	Mask	256	NO	
75P0016	16	OTP	256	NO	
750064	4	Mask	256	NO	
750066	6	Mask	256	NO	

Navigation: Main, Previous, History, Fax Request, Datasheet, Users Manual

For more details please click a marked area with the mouse !!!



MAIN DIALOG - BUTTONS



Click this button to return to the [main index list](#)



Click this button to return to the previous [table of contents](#). The button is disabled if you did not yet open more than one table of contents.



The history button shows a list of recently opened table of contents. It is disabled if you did not yet open more than one [table of contents](#).



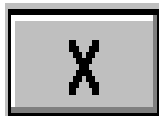
The FAX Request button is used to open a [FAX sheet](#) to order printed documentation.



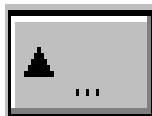
Click this button to open the datasheet associated to the currently selected device. If there is no datasheet for a device, the button is disabled.



Click this button to open the user's manual associated to the currently selected device. If there is no user's manual for a device, the button is disabled.



Use this button to clear all device [selection tags](#). Device can be tagged using the right mouse button.



Click this button to sort devices by device numbers. The sort-algorithm sorts devices into families, groups and sub groups. It is not an alphabetic sorting !



Use this button to set [selection criteria](#) and the sort order for each column.

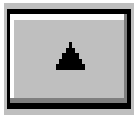


MAIN DIALOG - DEVICE SELECTION

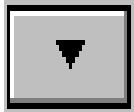
The screenshot shows the 'NEC - Digital Data Books' application. On the left is a 'Main table of Contents' with various categories like '75X Series', '78K0 Series', etc. The main area displays a 'PRODUCT DATA' table with columns: Device ID, ROM Size [KB], ROM Type, RAM [Bytes], and EEPROM Size. A dialog box titled 'ROM Size [KB]' is open over the table, showing a list of values (0, 2, 4, 6, 8, 12, 16, 24, 32) and buttons for 'Sort', 'Select', '<=', '=', '>=', and 'New Search'. The table data is as follows:

Device ID	ROM Size [KB]	ROM Type	RAM [Bytes]	EEPROM Size
75512	12	Mask	256	NO
75512(A)	12	Mask	256	NO
75516	16	Mask	256	NO
75516(A)	16	Mask	256	NO
75P516	16	Mask	256	NO
75517	24	Mask	256	NO
75517(A)	24	Mask	256	NO
75518	32	Mask	256	NO
75518(A)	32	Mask	256	NO
75P518	32	Mask	256	NO
750004	4	Mask	256	NO
750006	6	Mask	256	NO
750008	8	Mask	256	NO
75P0016	16	OTP	256	NO
750064	4	Mask	256	NO
750066	6	Mask	256	NO

For more details please click a marked area with the mouse !!!



Sort the selected column in ascending order



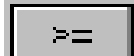
Sort the selected column in descending order



Select devices where column value is smaller then value in selection list



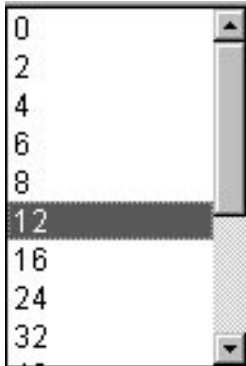
Select devices where column value equals one of the values marked in the selection list



Select devices where column value is bigger then value in selection list



MAIN DIALOG - DEVICE SELECTION



To select more than one value in the selection list, please press the CTRL-key and click with the left mouse button.

To select a range of values please hold down the SHIFT key when clicking with the left mouse button.



MAIN DIALOG - SEARCH MODES



There are three different search modes :

(1) NEW SEARCH

Search all devices and mark devices that meet the search criteria.

(2) REFINE

Search only in already marked devices. Clear tags for all devices that do not meet the search criteria.

(3) APPEND

Append found devices to currently tagged devices.



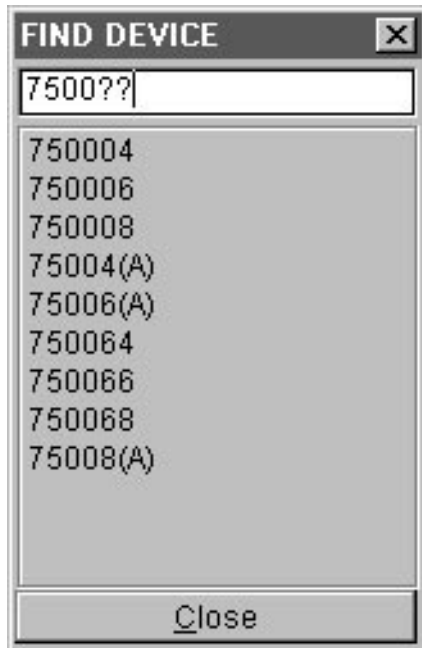
MAIN DIALOG - RIGHT MOUSE BUTTON FUNCTIONS

Table of contents

- | | |
|--------------------|-------------------------------------|
| Expand all | - Expand all branches of the tree |
| Collapse all | - Collapse all branches of the tree |
| Find device | - Search for a device ID |



MAIN DIALOG - FIND DEVICE FUNCTION



The *find device* function is usefull if you are looking for an individual device ID. You can scroll the complete device list or enter a search string using with wildcards (* and ?) to refine the search.



MAIN DIALOG - COLUMN HEADERS

ROM Size [KB]	ROM Type	RAM [Bytes]	EEPROM Size
--------------------------	---------------------	------------------------	------------------------

To move column headers, please click the header with the left mouse button and hold down the mouse button while moving to the desired new column position.

Click with the right mouse button to mark a column for a sort operation. If you press the right mouse button in the main table area, you can sort individual columns or groups of columns.

If more than one column is marked, the right most column will be sorted first.



HOTLINE SERVICE

If you have any problems or questions regarding the CD ROM software please contact :

Thomas Schreiner
c/o Schölzel, Sempert
Kaiserstraße 79
60329 Frankfurt / Main
Germany

Phone +49(0)69-242956.50
FAX +49(0)69-242956.30
e-mail 100260.2132@compuserve.com